

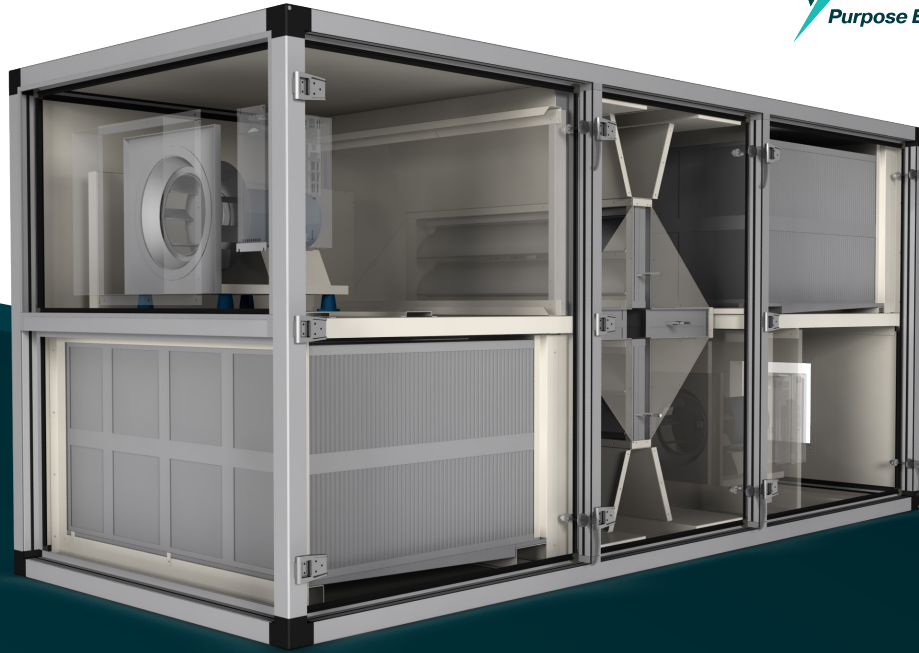


First in Quality, First in Service.

MECHANICAL PRODUCTS

VOLUME 1

EDMONTON



This four-damper design maximizes energy efficiency through separate modes; economizer, recirculation and standby

REGENCORE

THE INDUSTRY'S ONLY HIGH-EFFECTIVENESS ENERGY RECOVERY UNIT WITH FULLY TESTED INDOOR AND OUTDOOR PERFORMANCE DATA

This alternating mass exchanger ERU recovers **both sensible and latent energy** during both heating and cooling seasons, with no preheat required down to outdoor air temperatures of -40°C . Both of these design elements allow all downstream heating and cooling mechanisms to be downsized, leading to **additional savings**.

Our environmental chamber allows for precision testing from 40°C to -40°C

Industry-leading sensible effectiveness rates up to

92%

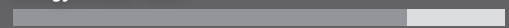


The Environmental Chamber at the SolutionAir Tech Centre in Winnipeg, MB

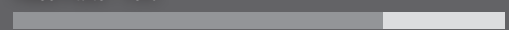
RegenCore - 92%



Energy Wheel - 80%



Fixed Plate - 75%



Heat Pipe - 60%



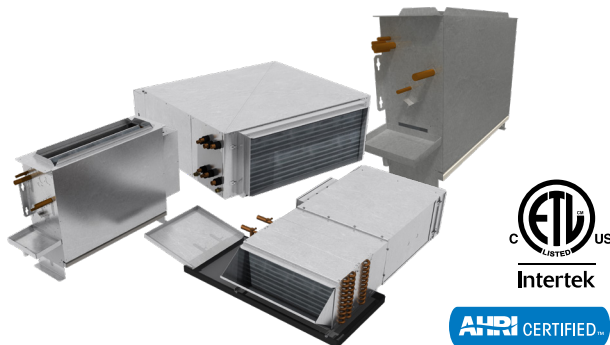
Source: 2016 ASHRAE Handbook – HVAC Systems and Equipment, Chapter 26, Table 3

Discover the RegenCore ERU and SolutionAir's trusted line of air handlers, precision environmental control units, DX cooling and energy recovery options at www.solutionairgroup.com



SolutionAir
www.solutionairgroup.com

- Air-Cooled DOAS Units
 - Up to 20,000 CFM
 - Heating Options: Gas, Electric, Steam and Hydronic
 - Cooling Options: Hydronic and DX (Packaged or Split)
 - Energy Recovery Options
- Customizable Air Handlers
 - Up to 100,000 CFM
 - Indoor / Outdoor Construction
 - Single / Double Wall Construction
 - Heating Options: Gas, Electric, Steam and Hydronic
 - Cooling Options: Hydronic and DX (Packaged or Split)
 - Energy Recovery
 - Packaged Control
- Make-Up Air Units
 - Direct Fired: 250 – 15,000 MBH
 - Indirect Fired Drum and Tube: 200 – 6,000 MBH
 - Indirect Fired Convolute Tube: 75 – 1,200 MBH
 - 90% Efficient Indirect Fired: 250 – 1,600 MBH
- Rooftop Units (8 – 250 Tons)
 - Highly Configurable
 - Heating Options: Indirect Gas, Electric, Steam and Hydronic
 - Cooling Options: Hydronic and DX (Packaged Up to 160 Tons and Split Up to 250 Tons)
 - Energy Recovery Options



PRICE | FAN & BLOWER COILS

Price Industries Limited
www.priceindustries.com

- High Performance Fan Coils
 - Optional Integrated Silencer
 - Standard ECM Motor
- Horizontal Blower Coils
- Vertical Fan Coils
 - Concealed and Exposed



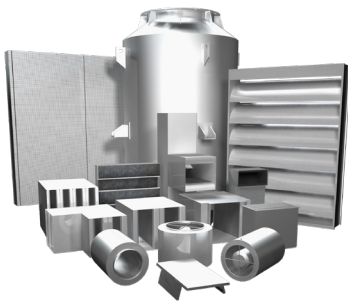
SolutionAir
www.solutionairgroup.com

- RegenCore Alternating Mass-Exchanger Energy Recovery Units
 - No Pre-Heat Requirements Down to Outdoor Temperatures of -40°C
 - Up to 92% Effectiveness



Antec Controls
www.antecontrols.com

- Valves
 - Venturi Valves – High Turndown Ratio and Mechanical Pressure Independence
 - Venturi FX – Measured Airflow and Low Pressure Operation
 - Integrated Venturi Valve Assembly Options
 - Performance Guaranteed Venturi with Integrated Silencer Assemblies
 - AHRI 410 Certified Venturi with Hot Water Coil Assemblies
 - UL1995 Certified Venturi with Electric Coil Assemblies
- Monitors and Controls
 - Room Monitors
 - Touchscreen Room Pressure Monitor – High Resolution Touchscreen Display
 - Multi-Variable Monitor – High Resolution Touchscreen Displaying up to 8 Rooms on Main Screen
 - All Monitors Have Native BACnet MS/TP Connection
 - Pace™ Critical Space Controller
 - Volumetric Offset or Pressure Control
 - Temperature and Humidity Control
- Fume Hood Controls
 - Fume Hood Controller
 - Sash Position Sensing Fume Hood Control
 - Sidewall Sensing Fume Hood Control
 - Hybrid Fume Hood Control
 - Presence Sensing
 - Fume Hood Interface



Price Industries Limited
www.priceindustries.com

- Commercial and Custom Silencers
- Rectangular, Elbow and Circular Silencers
- Absorptive, Film-Lined and Packless Silencers
- Air Transfer and Cross-Talk Silencers
- Acoustic Panels, Enclosures and Barriers
- Acoustical Louvers



Price Industries Limited
www.priceindustries.com

- Chilled Beams
 - Linear, Modular, Horizontal, Vertical and Floor-Mounted Active
 - Linear Passive
- Passive with Integrated Returns
 - Controls and Hose Kits
- Retrofit Perimeter Induction Units



PRICE | CONTROLS

Price Industries Limited
www.priceindustries.com

- Application Specific Controls for:
 - Networked or Stand-Alone Applications
 - VAV / VVT Controllers (BTL Certified)
 - Mini-Front-End Solutions
- Pneumatic Stand-Alone Controls
- Control Applications:
 - Rooftop Controls
 - Bypass Controls
 - Single Duct Controls
 - Fan Powered Controls
 - Prodigy Smart Diffusers
 - Web Server Graphical Interface
 - Hydronic Controls
 - Underfloor Controls



zehnder
Rittling

Zehnder Rittling
www.zehnder-rittling.com

- Wall-Fin Radiation
- Convectors
- Cabinet Unit Heaters
- Unit Heaters
- Radiant Ceiling Panels
- Panel Radiators
- Induction Units
- Water Source Heat Pumps



FRANKLIN
CONTROL SYSTEMS

Franklin Control Systems
www.franklin-controls.com

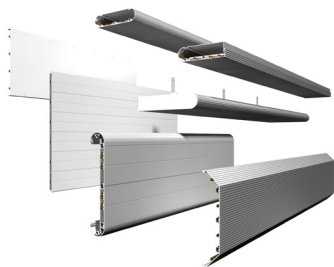
- HVAC Specialty Products
 - Building Automation Starters
 - Standard Automation Starters
 - Cooling Tower Controls
 - Kitchen Hood Controls
 - Pump and HVAC Controls
- Industrial Products
 - Contactors and Overload Relays
 - Manual Motor Starters
 - Circuit Breakers
 - Starters
 - Soft Starters
 - Soft Starters with Integrated Bypass
 - Programmable Logic Controllers
 - Terminal Blocks
 - Pilot-Devices
 - Enclosures



Franklin Electric

Franklin Electric
www.franklin-electric.com

- Commercial and Industrial Centrifugal Pumps
- Booster Pump Systems
- Packaged Pump Systems
- Multi-Stage Pumps
- Utility Pumps
- Sump Pumps
- Condensate Removal Pumps
- Sewage Pumps
- Submersible Pumps



Twa Panel Systems
www.twapanel.com

- Radiant Panels
- Chilled Sails
- Active Beams
- Induction Units
- Available with:
 - Hydronic Controls
 - Condensate Sensors
 - Hose Kits



Vulcan Radiator
www.vulcanrad.com

- Commercial Hydronic Heating Products Including:
 - Commercial Wall-Fin Radiation
 - Light Commercial Wall-Fin Radiation
 - Cabinet Unit Heaters
- Convectors
- Horizontal and Vertical Unit Heaters
- Panel Radiators
- Custom Enclosure
- Security Enclosure



Greenheck
www.greenheck.com

- Vertical Fan Coil
 - 300 to 3,500 cfm
 - Up to 3.5 in. wg external static pressure
 - Coils: hot water, steam, chilled water, and direct expansion
- Modular Small Cabinet Fan Coil
 - Low profile (as low as 11 in.)
 - 300 to 4,700 cfm
 - Up to 4 in. wg external static pressure
 - Pre- and/or post-filters
- Coils: hot water, steam, electric, chilled water, and direct expansion
- Re-heating coils: hot water and steam
- Mixing box
- Low Profile Fan Coil
 - Low profile (as low as 11 in.)
 - 300 to 4,700 cfm
 - Up to 3.5 in. wg external static pressure
 - Coils: hot water, steam, chilled water, and direct expansion



Greenheck
www.greenheck.com

- Coils
 - Chilled Water
 - Hot Water
 - DX Evaporator
 - Heat Reclaim
- Condenser
- Standard Steam
- Non-Freeze Steam Distributing
- Booster / Duct Mounted



Aermec
www.aermec.us

- Water-Cooled Chillers
 - Cool Only: 15 – 139 Tons
 - Heat Pump: 15 – 139 Tons
 - Simultaneous Heat / Cool: 31 – 129 Tons
 - Modular: 31 Tons (Up to 32 Modules)
- Air-Cooled Chillers
 - Cool Only: 6.5 – 261 Tons
 - Heat Pump: 2 – 261 Tons
 - Simultaneous Heat / Cool: 12 – 240 Tons
 - Free Cooling: 13 – 236 Tons
 - Modular: 29 Tons (Up to 9 Modules)
- Air-to-Water Heat Pumps
 - Outdoor Mounted Heat Pump: 2 – 261 Tons
 - Indoor Mounted Heat Pump: 15 – 90 Tons
 - Simultaneous Heat / Cool: 12 – 240 Tons
- Water-to-Water Heat Pumps
 - Heat Pump: 15 – 139 Tons
 - Simultaneous Heat / Cool: 31 – 129 Tons



Aermec
www.aermec.us

- Fan Coil Units
 - Universal Room Mount: 0.28 – 2.45 Tons
 - Ducted Hide-Away: 0.28 – 2.45 Tons
 - Highwall: 0.54 – 1.08 Tons
- Cassette: 1.70 – 3.12 Tons
- Multi-Zone Distribution Plenum

INNOVATIVE & EFFICIENT



MODULAR SOLUTIONS



REINVENTING THE INDUSTRY

There's no other product on the market today that's as flexible as the Aermec modular chiller. This is because the modules are so compact that they can fit through standard doors and elevators, numerous installation configurations are possible, maintenance is a breeze, and quiet operations enable the system to go almost anywhere in the building.



Ultimate Flexibility

Aermec modular chillers come together to form one larger chiller, which means each module is compact and has a small footprint.

The extremely quiet operation of the units provides the perfect solution for sound sensitive applications.

NYB

Modular Chiller or Freecooling Chiller

Cooling 29 Tons

Can connect up to 9 units on one controller

Available with partial heat recovery

Microchannel condenser coils

AIR TO WATER



WWM

Modular Stackable Chiller

Cooling 31 Tons | Heating 426,449 Btu/h

No clearance required on the top, back, or side

Up to 66% smaller footprint than competitors

Single point power connection

WATER TO WATER

AHRI CERTIFICATION

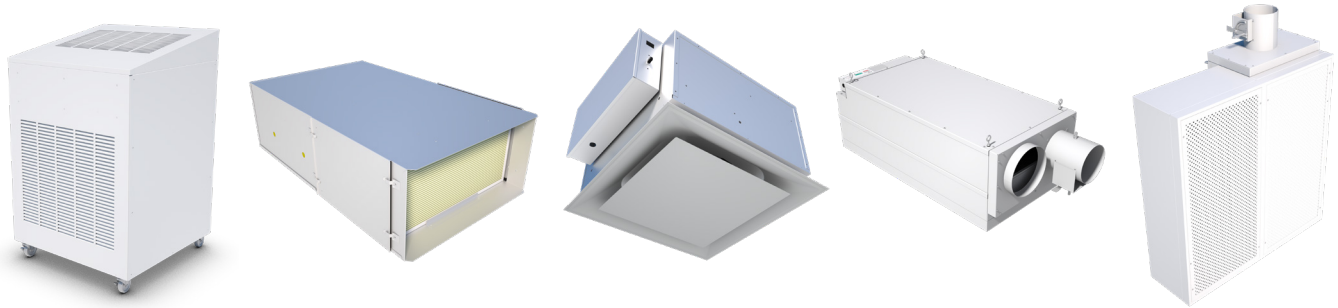
We are proud to share that our modular units are AHRI Certified. The WWM is AHRI Certified as a chiller and the NYB is AHRI Certified as a chiller and a free cooling chiller in North America





Greenheck
www.greenheck.com

- Direct and Indirect Gas-Fired Make-Up Air Units
- Dedicated Outdoor Air Systems
- Preconditioner Energy Recovery Ventilators
 - Energy Recovery Wheels
 - Total Energy Core
- Indoor Air Handling Units
- Heat Recovery Products
- Cooling Options
 - Packaged Direct Expansion
 - Chilled Water
 - Split Direction Expansion
- Heating Options
 - Gas
 - Electric
 - Hot Water
- ERV - Energy Recovery Ventilator
 - 400 to 12,000 cfm
 - 1.5 in. wg external static pressure
 - Louvered intake weatherhood lowers supply air intake velocities to prevent rain and snow from being pulled into the unit
 - 2-inch outdoor and return air filters with a MERV 8 (30% efficiency) rating
 - 18 gauge outer wall construction
 - Multiple energy wheel options allow selection of a unit by what is critical in the design or application:
 - Effectiveness
 - Recovery Efficiency Ratio (RER)
 - Low blower horsepower
- ERH - Energy Recovery Ventilator with Heating
 - 10,000 cfm
 - 1.5 in. wg external static pressure
 - Fresh outdoor air is pre-conditioned by the total enthalpy wheel, recovering a majority of the energy from the exhaust air
 - Saves 3-4 tons of cooling per 1000 cfm
 - Saves 50-60 MBH of heating per 1000 cfm
 - The heating section further tempers cold outdoor air to desired conditions

**RAP: Room Air Purifier**

- Rapid purification for high density areas
- UL 2998 and UL 867 certified
- Simple plug and play design
- Optional bipolar ionization and UV light treatment

OAP: Overhead Air Purifier

- Premium installation flexibility
- Quiet air purification solution
- Ceiling mounted design to save valuable floor space
- Optional bipolar ionization and UV light treatment

CAP: Ceiling Air Purifier

- Ceiling concealed with ultra quiet operation
- Motion sensor for maximum efficiency
- Smart Replacement Filter Indicator
- No modifications to existing HVAC system required

PURAFLU: Commercial Fan Filter Unit

- Cleanroom-grade HEPA filtration
- Easy to install with no impact on existing HVAC
- Floor mount for immediate use or ceiling mount for permanent solution
- Dual-outlet reverse flow configuration able to increase air change rate and create negative room pressure

CARES: Critical Area Recirculation/Exhaust Systems

- Part of the Pandemic-Ready Patient Room solution that converts a standard patient room to a negative pressure isolation room at the touch of a button
- Combines a reverse flow Fan Filter Unit (with HEPA) and a one-way, radial diffuser to manage airflow for an entire patient room



UNITECH
www.unitechair.com

- Units ranging from 2,000 CFM to 300,000 CFM (Catalogued from 5,000 CFM to 91,000 CFM)
- Maximum sound attenuation with four inch, double wall construction
- Penthouse units available up to 400,000 CFM
- Factory-installed controls and piping available
- Cooling Options: Hydronic or DX (Packaged Air-Cooled or Water-Cooled available)
- Heating Options: Hydronic, Steam, Electric or Gas
- Humidification Options: Gas, Electric or Steam-to-steam
- Knockdown construction available
- Custom Air Handlers



VTS
www.vtsgroup.com

- Semi-Custom/Modular Air Handlers
- 800 CFM – 38,000 CFM
- AHRI Certified Energy Recovery Options
- Full Thermal Break Construction
- Standard 2000-hour Salt Spray (ASTM B117)
- Short Lead Times
- 18-month Standard Warranty



Biddle Climate Solutions
www.biddle.ca

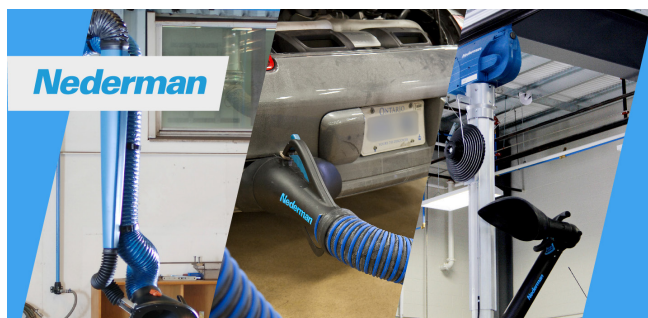
- Commercial, Retail and Industrial Air Curtains
- NOZ Adjustable Nozzle Unit Heater for High Induction



Manufacturing Excellence Since 1931

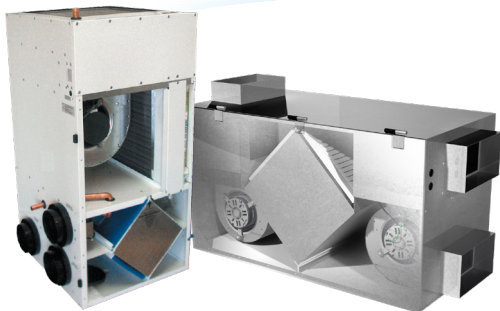
Dwyer
www.dwyer-inst.com

- Pressure Gages and Manometers
 - Air Velocity Meters
 - Flow Transmitters, Sensors, Meters and Indicators
 - Level Indicators, Detectors and Controllers
 - Temperature Controllers
 - Valves
- Air Quality Instruments
- Hazardous Rated
 - Valves
 - Temperature Transmitters
 - Pressure Switches
 - Flow Products
 - Level Models
 - Pressure Transmitters
- Test Equipment



Nederman
www.nederman.com

- Fume Extraction Arms and Fans
- Bench Top Flexible Extraction Arms and Fume Cabinets
- Filter Carts and Filter Box Mobile Fume Extractors
- Vehicle Exhaust Fume Extractors and Hose Reels
- Fume Extraction Rail Systems
- Electrostatic and Oil Mist Filters
- Magna Track Fire Station Exhaust Extractors for Rescue Vehicles



Nu-Air Ventilation
www.nu-airventilation.com

- Heating and Energy Recovery
 - HRVs and ERVs for Residential Applications
 - HRVs and ERVs for Commercial Applications
 - Central Air and Fan Coils
 - Air Exchangers
 - Controls and Accessories



Fantech
www.fantech.net

- Heating and Energy Recovery
 - HRVs and ERVs for Residential Applications
 - HRVs and ERVs for Commercial Applications
- Inline Duct Fans
- Bathroom / Kitchen / Dryer Exhaust Fans
- Round Backdraft Dampers
- Lint Traps



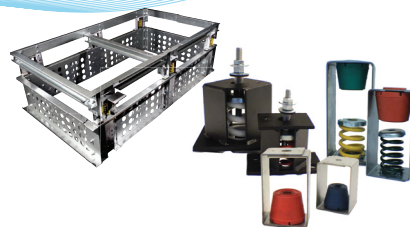
Honeywell Analytics
www.honeywellanalytics.com

- Commercial Gas Detection Systems
- Monitors, Controllers and Hand-Held Products



Belimo
www.belimo.ca

- Control Valves
 - Electronic Control Valves
 - Zone Control Valves
 - Globe Valves
 - Butterfly Valves
- Actuators



Sterling HVAC Products
www.sterlinghvac.com

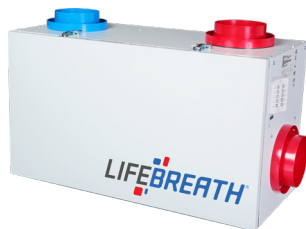
- Commercial Gas Heating
 - Gas Fired Unit Heaters
 - Gas Fired Duct Furnaces
- Commercial Hydronic Heating
 - Hydronic Unit Heaters
 - Cabinet Unit Heaters
 - Convectors
 - Wall-Fin



VMC GROUP
THE POWER OF TOGETHER™

The VMC Group
www.thevmcgroup.com

- Floor Mounted Isolators
- Bases, Rails and Brackets
- Hangers
- Pad-Type Isolators
- Flexible Connectors
- Piping Specialties
- Seismic Products
- Floating Floors
- Anti-Vibration Seismic Roof Bases
- Unitized Curbs and Rails for Rooftop Mounted Mechanical Equipment



Lifebreath
www.lifebreath.com

- Inline Fans
- Heat Recovery Ventilators
- Turbulent Flow Precipitators
- Clean Air Furnace



ICC Chimney
www.icc-rsf.com

- Condensing Vent Sizes 5" – 24"
- Single Wall, Double Wall, Insulated
- UL Listed for Category I, II, III, IV Gas Fired Appliances
- AL29-4C or 444 Stainless Steel Construction
- Canadian Manufactured



Patterson-Kelley
www.pattersonkelley.com

- Condensing Boilers (300 to 4,000 MBH)
- Non-Condensing Boilers (750 to 3,000 MBH)
- Water Heaters (300 to 2,000 MBH)
- Controls

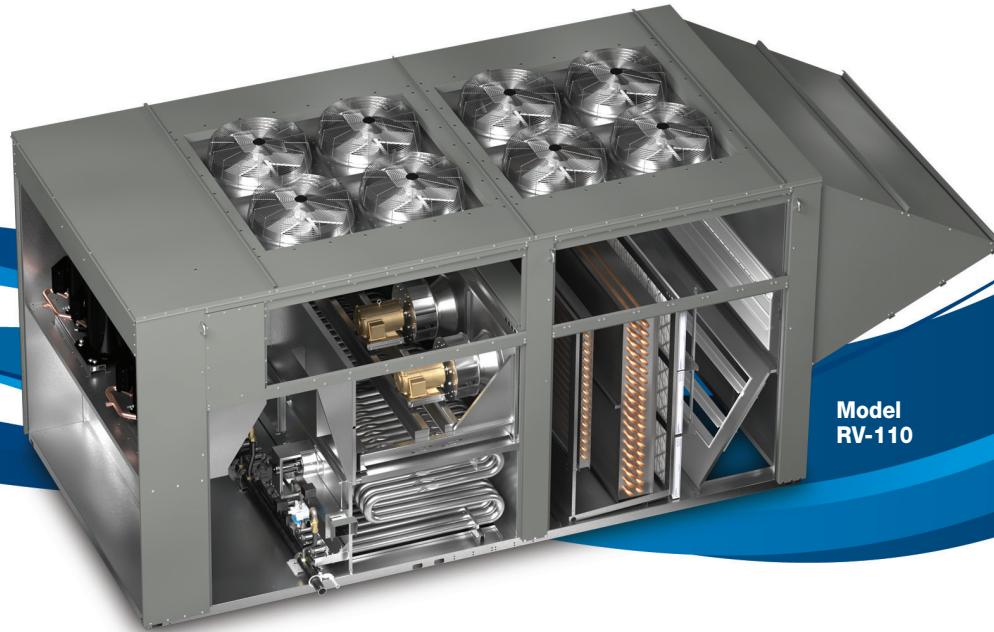


BOSCH

Florida Heat Pumps
www.bosch-thermotechnology.us

Heat Pumps

- Split: ½ – 6 Tons
- Water-to-Water: 2 – 35 Tons
- Water-to-Air: ½ – 60 Tons
- Geothermal: ½ – 60 Tons
- Roof Top: 4 – 30 Tons
- Console: ¾ – 1 ½ Tons



Model
RV-110

100% Dedicated... to Outdoor Air Systems.

Greenheck's new models, RV-110 and RVE-180 (with energy recovery), expand capacities up to 18,000 cfm with up to 70 tons of packaged cooling and 1,200 MBH of gas heat for high percentage and 100% outdoor air systems. Great for applications such as schools, hotels, offices, condos, and assisted living facilities.

Enhanced Controls: Greenheck sets a new level of excellence for precise control by enhancing the controls platform on all RV and RVE models. The factory-programmed, wired and tested microprocessor controller can operate independently or be integrated with a building management system (BMS). Additionally, the enhanced platform features a web user interface that provides a live graphic of the unit operation and access to menus to view and adjust the unit remotely.



**Factory-programmed
microprocessor controller.**

Value-added Features:

NEW Inverter Compressor Option.
Up to 16:1 turndown on Indirect Gas Furnace.
Standard low sound condenser fans.
Optional Modulating Head Pressure Control.



**Optional Inverter
Compressor for
improved part load
efficiency to reduce
energy costs.**

Learn more at greenheck.com or call 715.359.6171

Fans | Energy Recovery | Packaged Ventilation | Make-up Air | Lab Exhaust | Dampers | Louvers | Coils

NOTES

[illegible]

NOTES

[illegible]



E.H. PRICE EDMONTON

13428 – 149 Street N.W., Unit 113

Edmonton, Alberta T5V 0B7

Ph: 780.477.9231

Email: edmonton@ehpricesales.com

YEGMechQuotes@ehpricesales.com

Website: www.ehpriceedmonton.com



E.H. PRICE CALGARY

120, 10 Stonehill Place N.E.

Calgary, Alberta T3N 1T7

Ph: 403.777.2790

Email: calgary@ehpricesales.com

Website: www.ehpricecalgary.com

Local Delivery Available • Contact your E.H.Price Sales Representative for more information

.....

e.h.price

First in Quality, **First** in Service